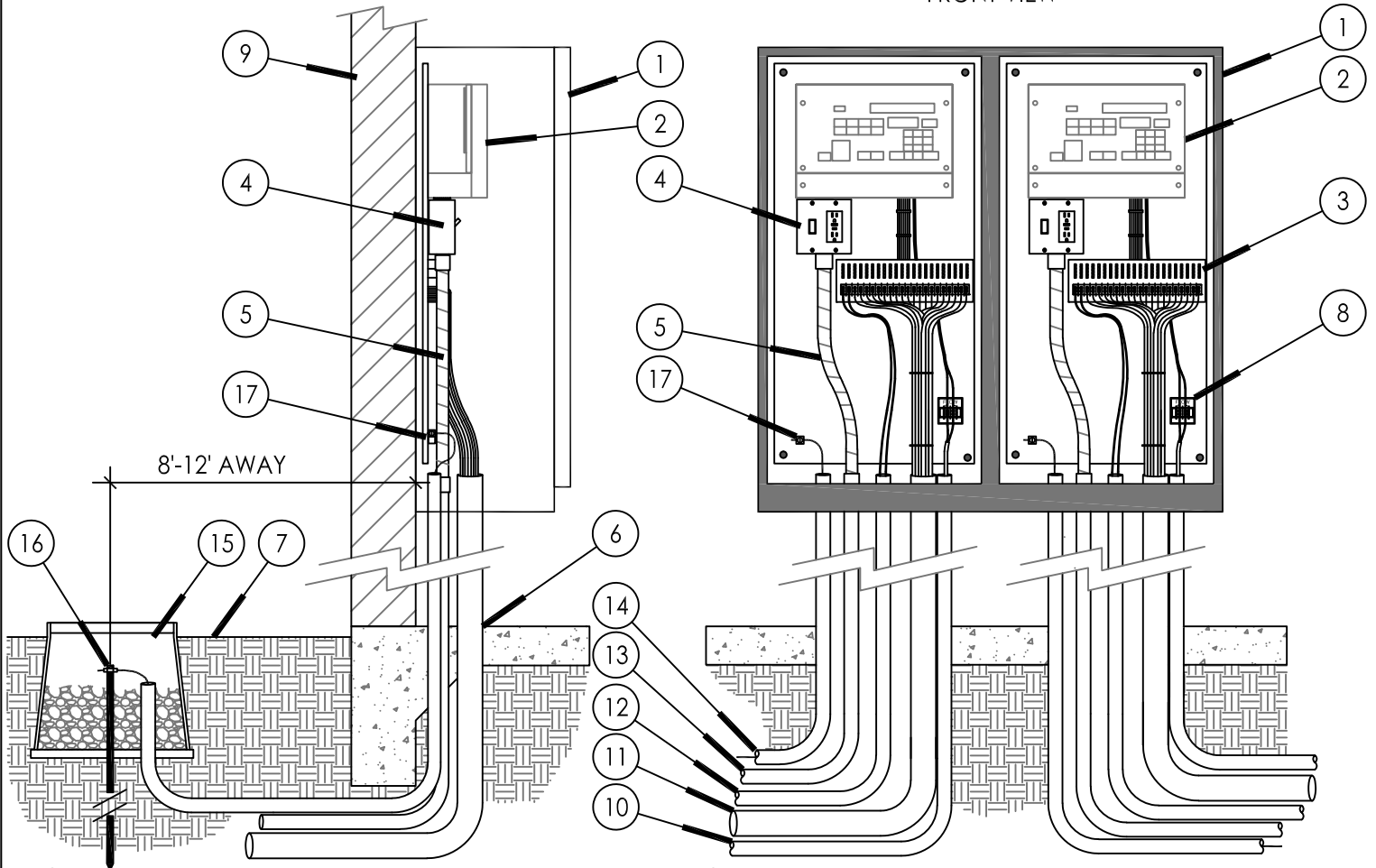


INDOOR / OUTDOOR

SIDE VIEW

FRONT VIEW



- ① STRONGBOX STAINLESS STEEL NEMA 3R RAINPROOF ENCLOSURE (UL LISTED) MOUNTED TO WALL.
- ② SATELLITE ASSEMBLY. ASSEMBLED ON BACKBOARD BY SITEONE GREEN TECH.
- ③ TERMINAL STRIP FOR VALVE WIRES.
- ④ POWER SWITCH / GFCI RECEPTACLE.
- ⑤ ELECTRICAL FLEX CONDUIT FOR POWER.
- ⑥ COORDINATE ALL CONDUIT RUNS THROUGH FOUNDATION FLOOR BEFORE CONCRETE POUR.
- ⑦ FINISHED GRADE.
- ⑧ FLOW SENSOR TERMINAL BOARD.
- ⑨ BUILDING WALL. ENSURE WALL AND ANCHORING ARE RATED FOR ENCLOSURE WEIGHT.
- ⑩ 1" CONDUIT AND SWEEP ELL WITH FLOW SENSOR CABLE.
- ⑪ 3" CONDUIT AND SWEEP ELL FOR LEAD WIRES.
- ⑫ 1" CONDUIT AND SWEEP ELL FOR MASTER VALVE WIRES.
- ⑬ 1" CONDUIT AND SWEEP ELL FOR 110 VAC POWER LINE.
- ⑭ 1" CONDUIT AND SWEEP ELL FOR GROUND WIRE.
- ⑮ 10" ROUND VALVE BOX AROUND GROUND ROD. FILL WITH 3/4" CRUSHED ROCK.
- ⑯ 5/8" X 8' GROUND ROD WITH #6 GROUND WIRE AND CLAMP. LOCATE 8'-12' FROM ENCLOSURE.
- ⑰ #6 GROUND WIRE SECURED TO BACKBOARD GROUNDING TERMINAL.

NOTE: SEE IRRIGATION LEGEND CALL OUT FOR INCLUDED SATELLITE COMMUNICATION COMPONENTS. SUGGESTED CONDUIT SIZES MAY NEED TO BE LARGER.

SA18 - STRONGBOX: SB-36SSW (36"W x 36"H x 12"D)
FRONT ENTRY WALL MOUNT ENCLOSURE

⑱ SATELLITE ASSEMBLY (SA)

