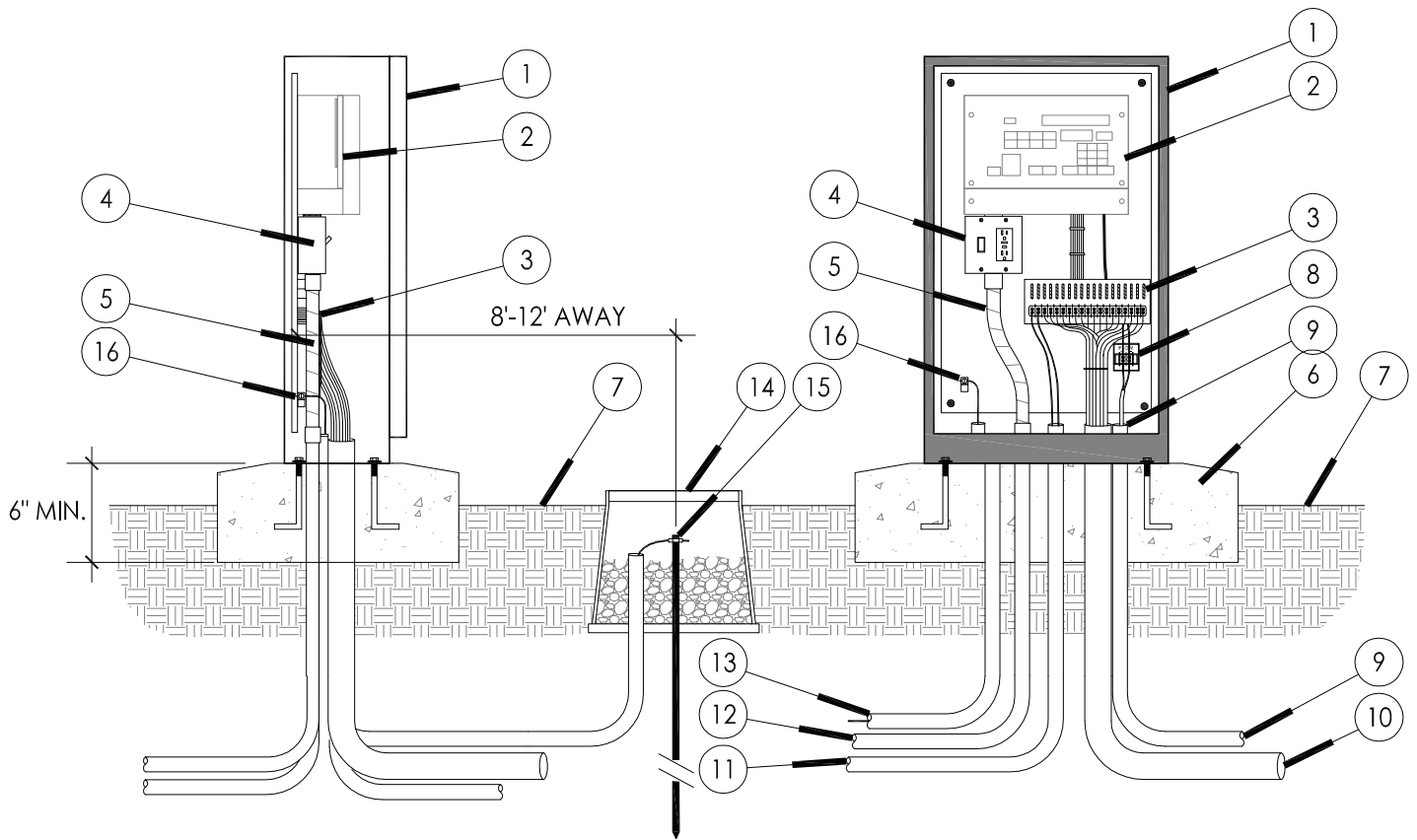


SIDE VIEW

FRONT VIEW



- | | |
|--|--|
| 1 STRONGBOX STAINLESS STEEL LIGHT DUTY ENCLOSURE. | 9 1" CONDUIT AND SWEEP ELL WITH FLOW SENSOR CABLE. |
| 2 CONTROLLER ASSEMBLY, ASSEMBLED ON BACKBOARD BY SITEONE GREEN TECH. | 10 3" CONDUIT AND SWEEP ELL FOR LEAD WIRES. |
| 3 TERMINAL STRIP FOR VALVE WIRES. | 11 1" CONDUIT AND SWEEP ELL FOR MASTER VALVE WIRES. |
| 4 POWER SWITCH / GFCI RECEPTACLE. | 12 1" CONDUIT AND SWEEP ELL FOR 110 VAC POWER LINE. |
| 5 ELECTRICAL FLEX CONDUIT FOR POWER. | 13 1" CONDUIT AND SWEEP ELL FOR GROUND WIRE. |
| 6 6" MIN THICK, CONCRETE PAD WITH ANCHOR BOLTS PER MANUFACTURER RECOMMENDATIONS. | 14 10" ROUND VALVE BOX AROUND GROUND ROD. FILL WITH 3/4" CRUSHED ROCK. |
| 7 FINISHED GRADE. | 15 5/8" X 8' GROUND ROD WITH #6 GROUND WIRE AND CLAMP. LOCATE 8'-12' FROM ENCLOSURE. |
| 8 FLOW SENSOR TERMINAL BOARD. | 16 #6 GROUND WIRE SECURED TO BACKBOARD GROUNDING TERMINAL. |

NOTE: SEE IRRIGATION LEGEND CALL OUT FOR INCLUDED OPTIONS. SUGGESTED CONDUIT SIZES MAY NEED TO BE LARGER.

**CA13 - STRONGBOX: LD-16S (16.75"W x 30"H x 8.25"D)
LIGHT DUTY - FRONT ENTRY ENCLOSURE - CONCRETE**



TEL: (800) 427-0779
FAX: (866) 477-9873
www.greentech.siteone.com

13 CONTROLLER ASSEMBLY (CA SERIES)