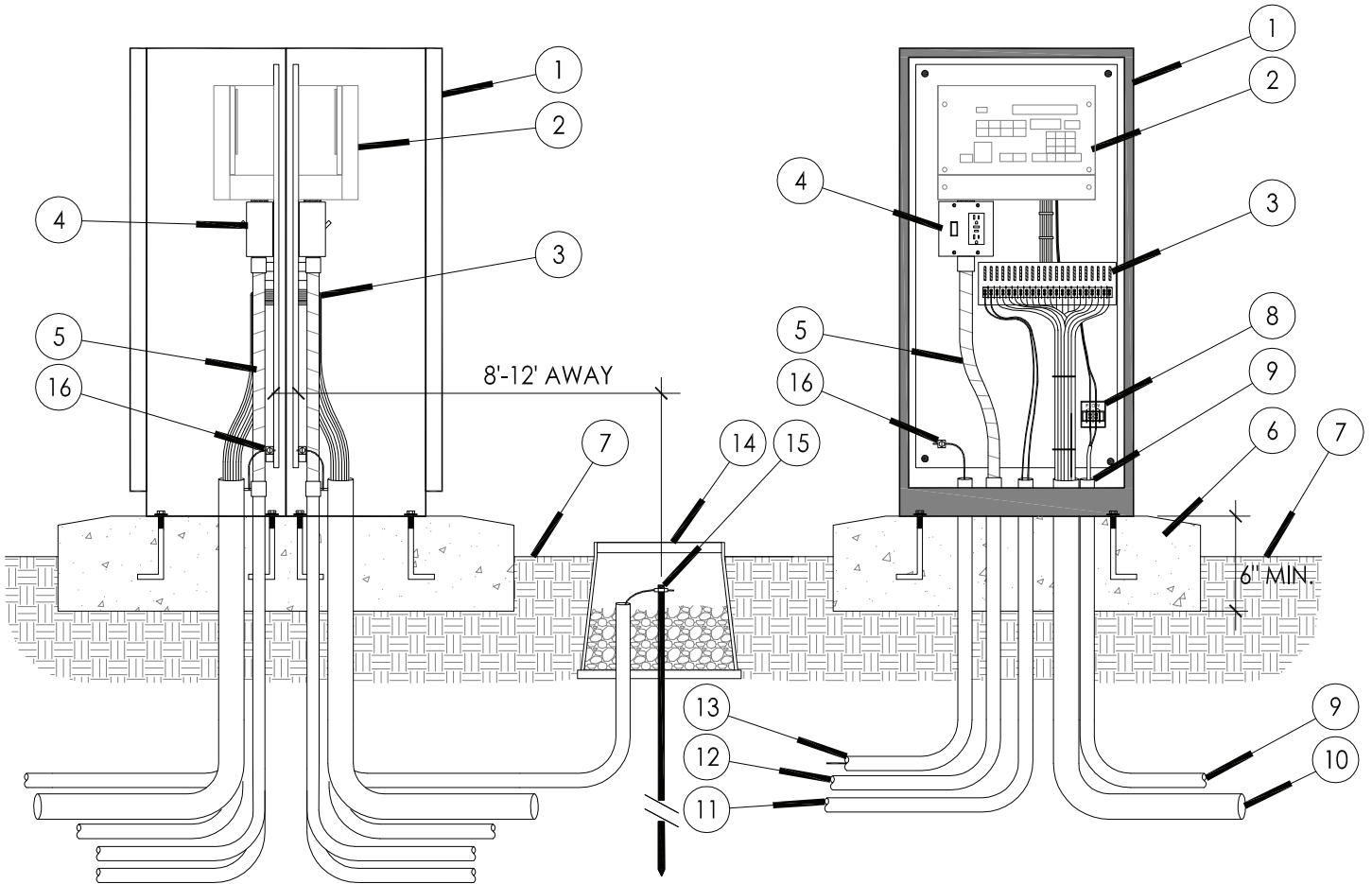


SIDE VIEW

FRONT VIEW



- | | |
|---|--|
| <p>1 STRONGBOX STAINLESS STEEL NEMA 3R RAINPROOF ENCLOSURE (UL LISTED).</p> <p>2 CONTROLLER ASSEMBLY. ASSEMBLED ON BACKBOARD BY SITEONE GREEN TECH.</p> <p>3 TERMINAL STRIP FOR VALVE WIRES.</p> <p>4 POWER SWITCH / GFCI RECEPTACLE.</p> <p>5 ELECTRICAL FLEX CONDUIT FOR POWER.</p> <p>6 6" MIN THICK, CONCRETE PAD WITH ANCHOR BOLTS PER MANUFACTURER RECOMMENDATIONS.</p> <p>7 FINISHED GRADE.</p> <p>8 FLOW SENSOR TERMINAL BOARD.</p> | <p>9 1" CONDUIT AND SWEEP ELL WITH FLOW SENSOR CABLE.</p> <p>10 3" CONDUIT AND SWEEP ELL FOR LEAD WIRES.</p> <p>11 1" CONDUIT AND SWEEP ELL FOR MASTER VALVE WIRES.</p> <p>12 1" CONDUIT AND SWEEP ELL FOR 110 VAC POWER LINE.</p> <p>13 1" CONDUIT AND SWEEP ELL FOR GROUND WIRE.</p> <p>14 10" ROUND VALVE BOX AROUND GROUND ROD. FILL WITH 3/4" CRUSHED ROCK.</p> <p>15 5/8" X 8' GROUND ROD WITH #6 GROUND WIRE AND CLAMP. LOCATE 8'-12' FROM ENCLOSURE.</p> <p>16 #6 GROUND WIRE SECURED TO BACKBOARD GROUNDING TERMINAL.</p> |
|---|--|

NOTE: SEE IRRIGATION LEGEND CALL OUT FOR INCLUDED OPTIONS. SUGGESTED CONDUIT SIZES MAY NEED TO BE LARGER.

**CA2 - STRONGBOX: SB-18DSS (18"W x 36"H x 24"D)
FRONT & REAR ENTRY ENCLOSURE - CONCRETE PAD**



TEL: (800) 427-0779
FAX: (866) 477-9873
www.greentech.siteone.com

2 CONTROLLER ASSEMBLY (CA SERIES)